

DIY tip: How to upcycle a tin can in Easter style!



1.



Find an empty tin can (e.g. baked beans), clean it properly and make sure there are no sharp edges

2.



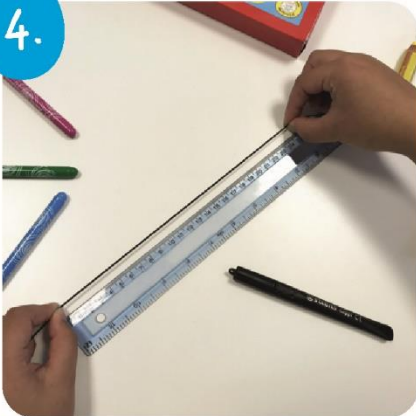
Measure the height of the can

3.



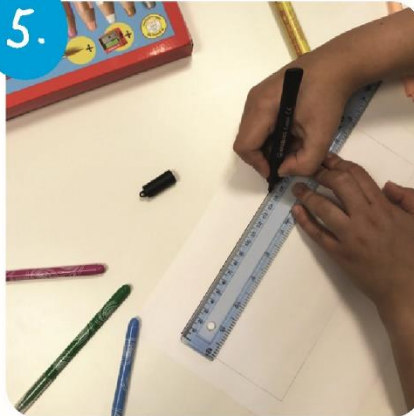
Measure the circumference of the can using a string

4.



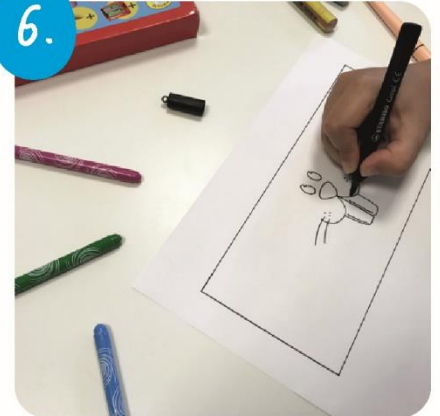
Measure the length of the string

5.

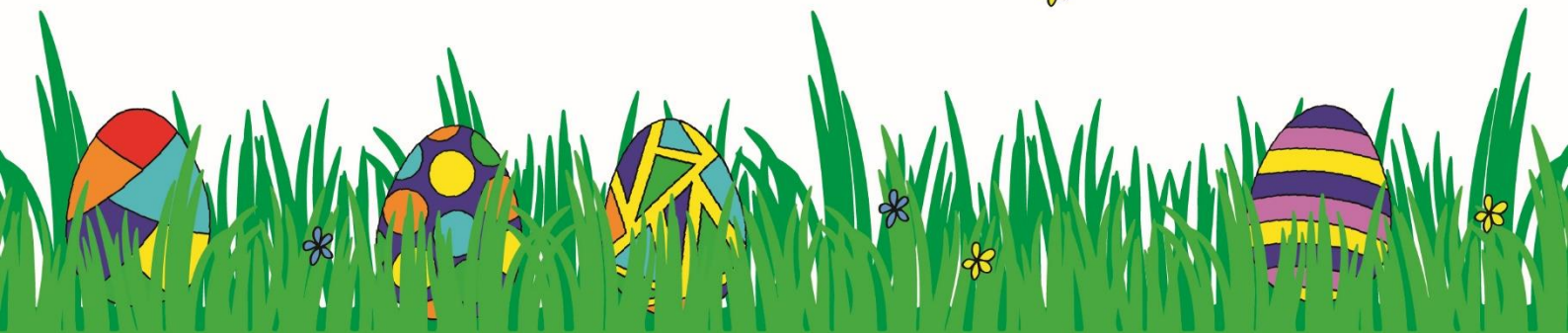


Draw a rectangle on A4 paper using the two measurements

6.



Draw & color in bunny eyes, nose & mouth





7. Cut out around the rectangle



8. Bend around the can and tape together



9. Draw bunny ears on another piece of paper



10. Cut out bunny ears



11. Stick ears to the inside of the tin



12. Put your pens in and enjoy!



Have fun & happy Easter!

